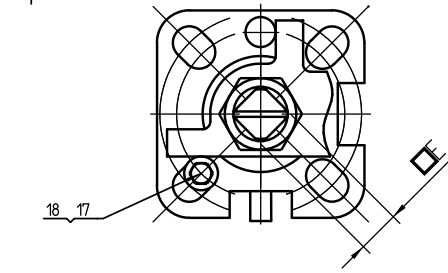
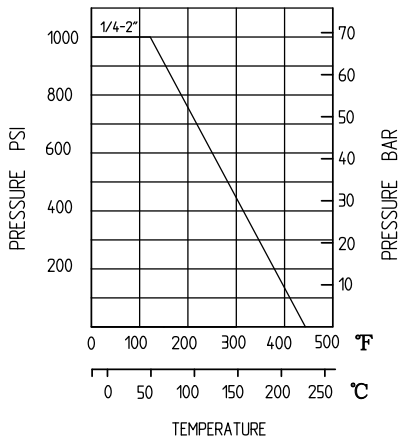


**FEATURES:**

- 1、 1000PSI/PN63
- 2、 Full Port
- 3、 Investment Casting
- 4、 Blow-out Proof Stem
- 5、 Locking Device Handle(Optional)
- 6、 PED97/23 EC
- 7、 Thread: DIN2999/259,ISO228-1,NPT,ISO7/1
- 8、 Inspection Testing: API598,EN12266

PRESSURE-TEMPERATURE RATING



3"	48	169	142	103.5	20	260	17
2-1/2"	48	147	133	94.5	20	260	17
2"	48	117	107	73.5	16	180	14
1-1/2"	38	103	96	63	16	160	14
1-1/4"	32	93	75	52	11.5	150	11
1"	25	80	68	46	11	135	11
3/4"	20	66	62	39	10.5	125	9
1/2"	15	59	57	35	10.5	125	9
<b>SIZE</b>	d	L	H	H1	h	W	

19	WASHER	304	1
18	NUT	304	1
17	BOLT	304	1
16	JOINT GASKET	PTFE	1
15	O-RING	VITON/NBR	1
14	THRUST WASHER	304	1
13	HANDLE	304	1
12	PLASTIC COVER	PLASTIC	1
11	LOCK DEVICE	304	1
10	STEM NUT	304	2
9	SPRING WASHER	304	2
8	GLAND RING	304	1
7	STEM PACKING	PTFE	1
6	STEM SEAL	PTFE	1
5	STEM	316	1
4	BALL SEAT	PTFE	2
3	BALL	CF8M	1
2	BODY	CF8/CF8M	1
1	CAP	CF8/CF8M	1