

800 WOG/ PN55  
SIZE: 1/2"-4"



ZIPSON'S 620, multi-way sanitary ball valve with ISO direct mount is a smart way to save the cost on sanitary pipe line and space. With T/L/X/I-port for 3/4-way block body type, and will be easy to find a suitable type for any application. The 620 designed with ISO direct mount for assembling the actuator directly.

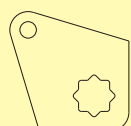
620 designed with cavity filler, this will filled the body cavity over 95%, especially for sanitary application to keep the media from remaining in the cavity and cleanse easily. Non-cavity filler is another option for your special use. The cavity is only for the valve interior with machining.

620 valve is 4 seats design, this will help to keep the ball position stably. And designed with a insert pin between the stem & ball to make sure the ball will not leaning after hundreds of operation. The 4 windows on the neck will let the media leak from while the valve leaks. This will protect the actuator to keep from damage by the media. And a good way to keep the working temperature lower, this will help to increase the life time of actuator.

Ends cap can be T-Clamp or Tube welding end (or extended tube welding ends if asked) types for normal sanitary pipe connection.

As for the soft kits, pure PTFE/ TFM1600/ UPE (UHMWPE) are available for different application.

Valve with PTFE/ PFA coating are available while required. It helps to be anti-sticky on both external & internal body, ball, and stem.



180° stop plate

501T ball valve is available for 180° operation. This design will allow more flow patterns to be use in your pipe works. Customer just have to change a 180° stop plate for this option.

### SPECIFICATION

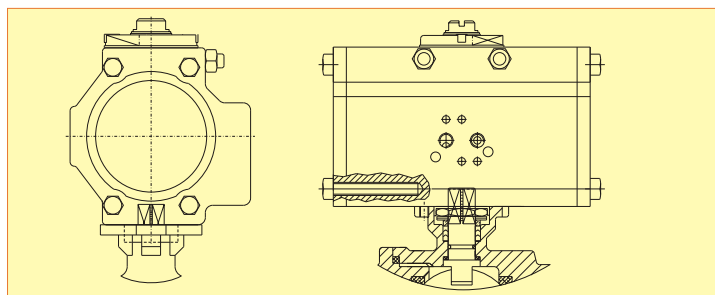
- \* Body & end caps quality investment casting
- \* Available in stainless steel or carbon steel
- \* with ISO 5211 direct mounting pad
- \* Adjustable stem packing
- \* Blow-out proof stem design
- \* Available in L/ T/ X/ I-port
- \* Available in 3/ 4-way in block body type.
- \* with Cavity filler
- \* 100% air tested under water at 80-100 psi
- \* Temperature range -20°F to 450°F
- \* End type: T-Clamp, Tube Weld, Extended Tube Weld
- \* with locking function

### OPTION

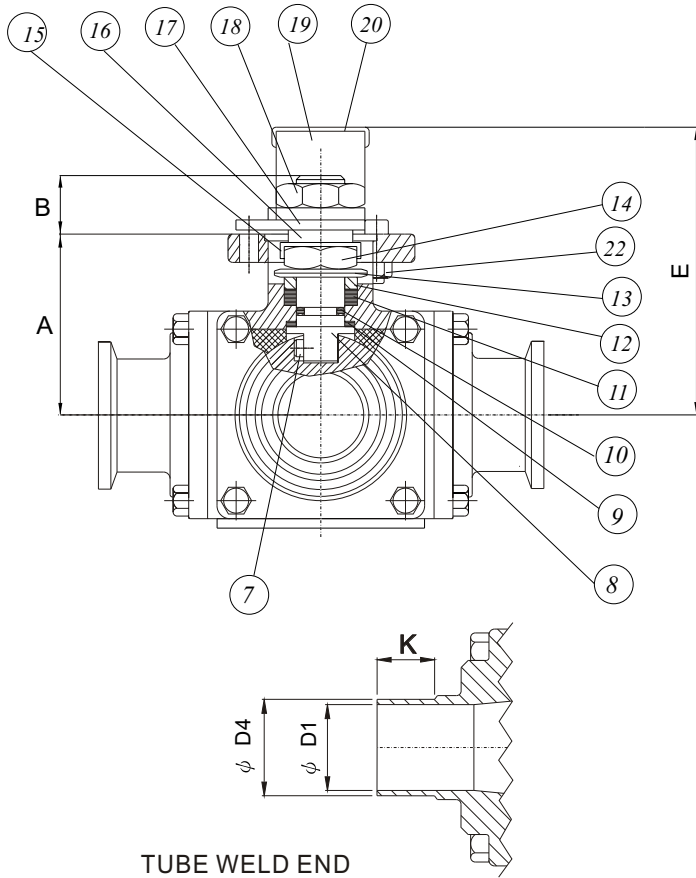
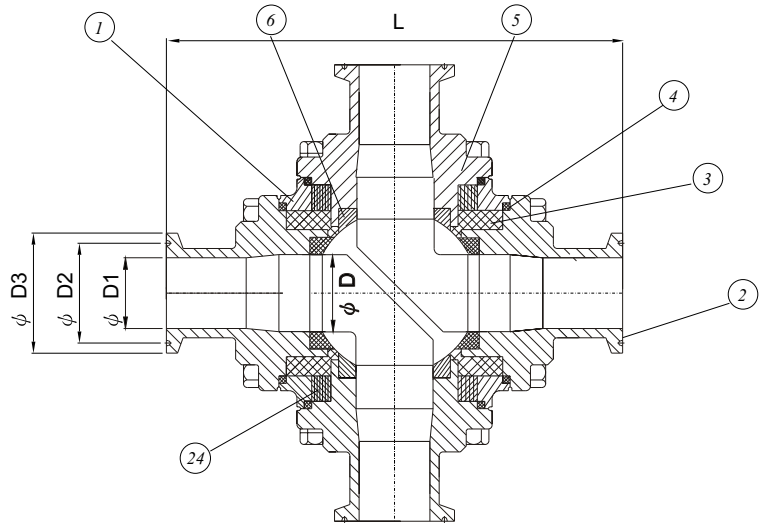
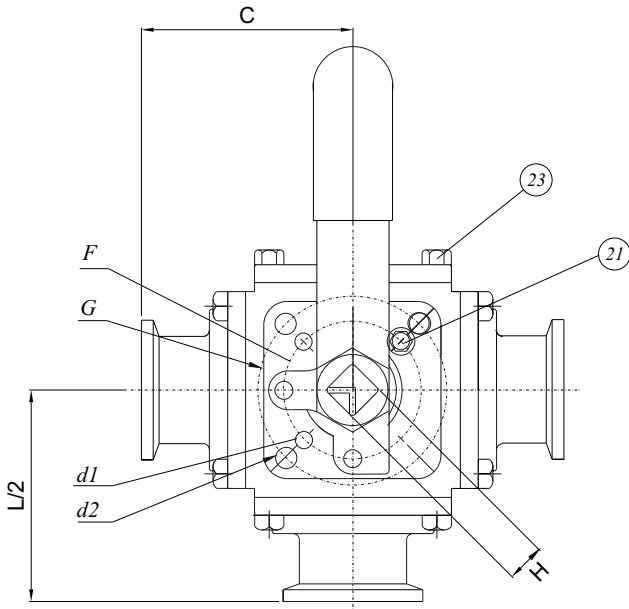
- \* CF3M (SS316L)
- \* Automation application
- \* PTFE/ PFA coating (40-70 um)
- \* TFM1600/ UPE (UHMWP) soft kits
- \* non-Cavity filler
- \* 180 degree operation stop plate
- \* Port polish according to customer's requirement
- \* ASME/ BPE STANDARD (for SS316L)
  - low ferrite ( <3%)
  - low sulphur (0.005% to 0.017%)



Note: The cavity filler is well developed for all ZIPSON's multi-way products (Item 501T/ 501F) with the body interior machining.



- ISO direct mount for actuator assembling directly.
- \* Pneumatic (DA or SR)/ Electric actuator
  - \* Solenoid valve/ Limit Switch Box/ EP



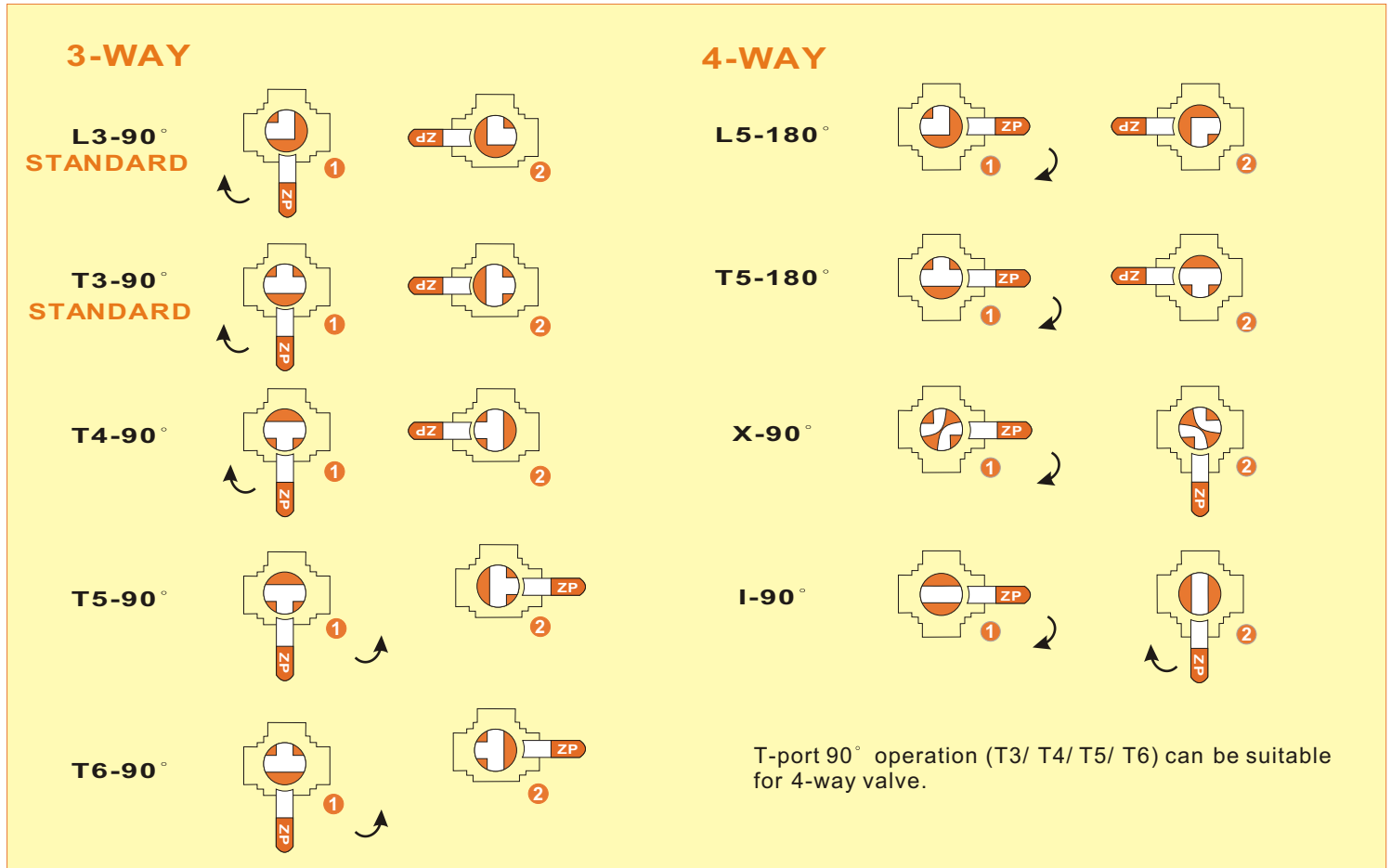
### MATERIALS LIST, 1/2" to 2"

ITEM	PART NAME	MATERIALS
1	BODY	CF8M/ CF3M
2	T-CLAMP END	CF8M/ CF3M
3	CAVITY FILLER	PTFE
4	GASKET	PTFE
5	BLANK CAP	CF8M/ CF3M
6	SEAT	PTFE
7	INSERT PIN	SS 316
8	STEM	SS 316/ SS316L
9	THRUST WASHER	RPTFE
10	O-RING	VITON
11	STEM PACKING	PTFE
12	GLAND	SS 304
13	DISK WASHER	SS 301
14	STEM NUT	SS 304
15	NUT STOP	SS 304
16	SPACE WASHER	SS 304
17	STOPPER PLATE	SS 304
18	HANDLE NUT	SS 304
19	HANDLE	SS 304
20	SLEEVE	PLASTIC
21	STOP PIN	SS 304
22	STOP PIN NUT	SS 304
23	BOLTS	SS 304
24	FILLER HOUSING	SS 304

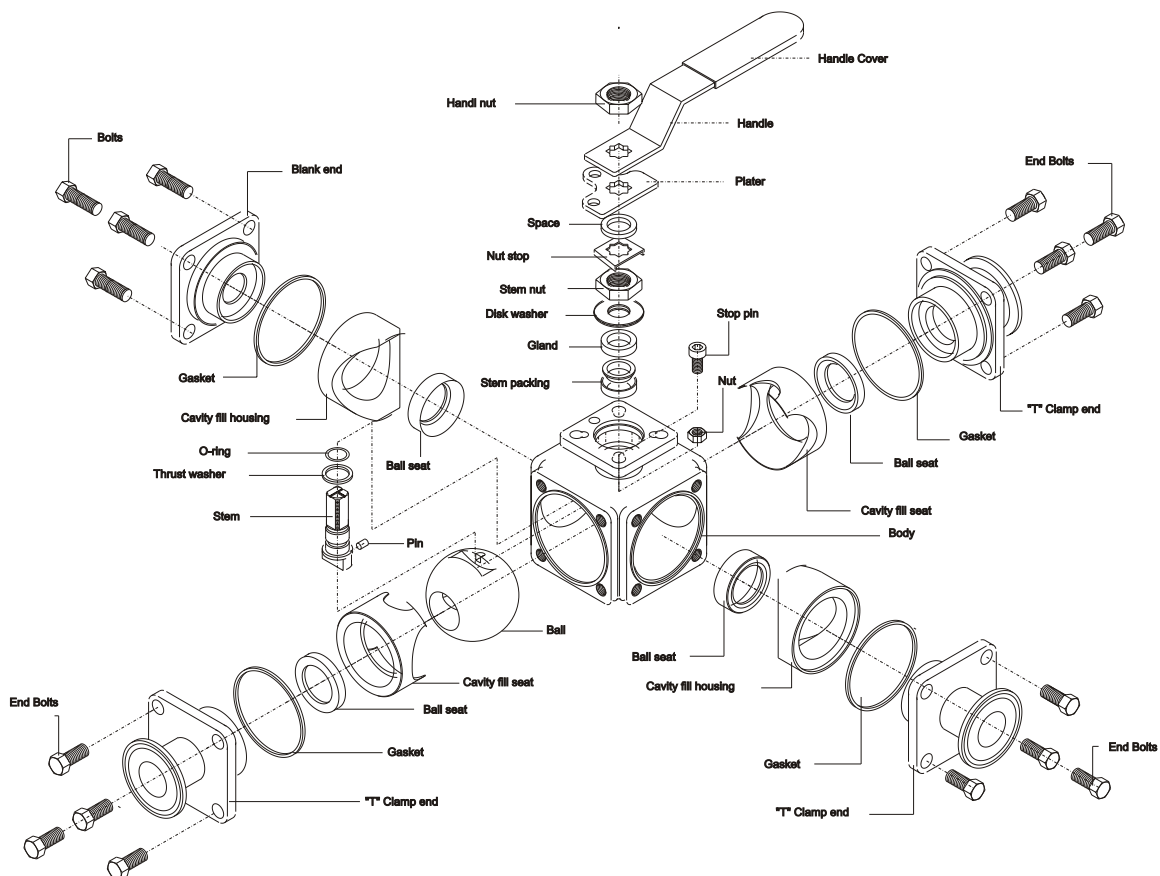
### DIMENSIONS, 1/2" to 2" (mm)

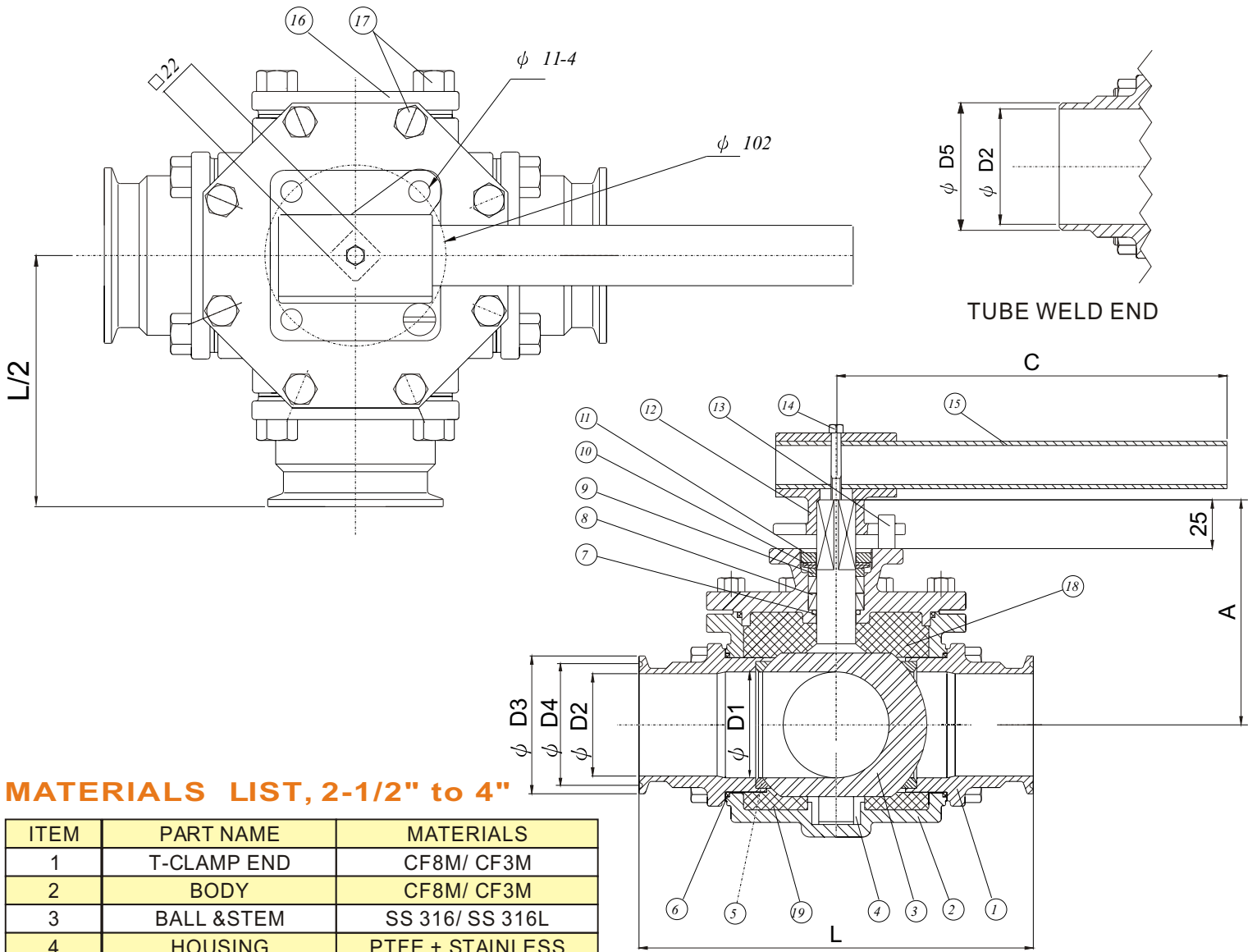
SIZE	A	B	C	d1	d2	E	F	G	H	L/2	L	D	D1	D2	D3	D4	K	3-Way W(kg)
1/2"	37.5	9.5	130	6.0	6.0	62	36	42	9	60	120	12	9.6	21.7	25	12.7	15	1.36
3/4"	42	11	130	6.0	6.0	64	36	42	9	68	136	15	15.8	21.7	25	19.05	20	2.68
1"	55	14	165	6.0	7.1	89	42	50	11	80	160	25	22.1	43.5	50.4	25.4	20	4.37
1 1/2"	74	16	205	7.1	9.2	108	50	70	14	91	182	38	34.8	43.5	50.4	38.1	20	8.58
2"	93	21	325	9.2	11.4	140	70	102	17	108	216	50	47.5	56.5	63.9	50.8	20	15.33

**FLOW PATTERN**



The wise use of 3-way or multi-way ball valve will help to save much cost on pipe line installation & the cost of place.





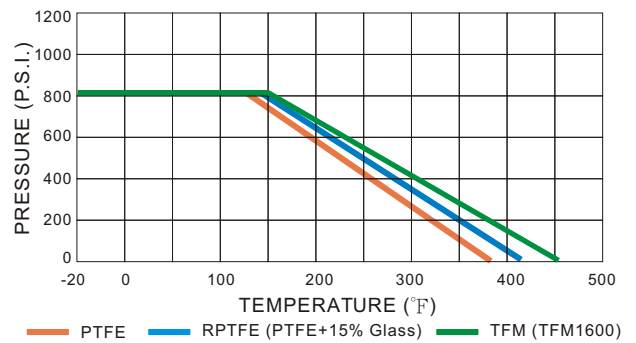
## MATERIALS LIST, 2-1/2" to 4"

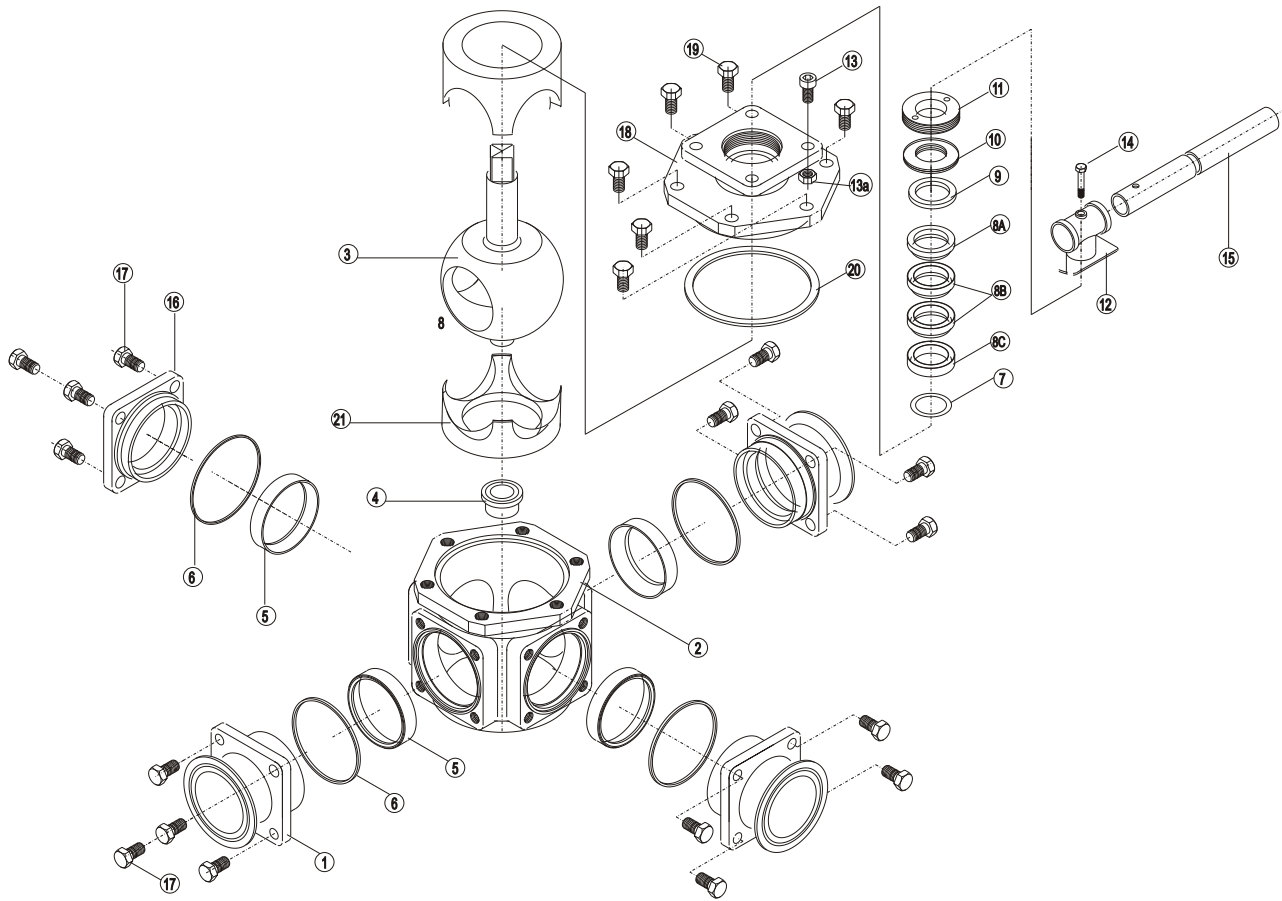
ITEM	PART NAME	MATERIALS
1	T-CLAMP END	CF8M/ CF3M
2	BODY	CF8M/ CF3M
3	BALL & STEM	SS 316/ SS 316L
4	HOUSING	PTFE + STAINLESS
5	SEATS	PTFE
6	GASKET	PTFE
7	O-RING	VITON
8	STEM PACKING	PTFE
9	GLAND WASHER	SS 304
10	DISK WASHER	SS 301
11	GLAND	SS 304
12	HANDLE HEAD	Cf8
13	STOP PIN	SS 304
14	SET BOLT	SS 304
15	HANDLE	STEEL PIPE
16	BLANK CAP	CF8M/ CF3M
17	BOLT	SS 304
18	CAVITY FILLER (A)	SS 304
19	CAVITY FILLER (B)	SS 304

## DIMENSIONS, 2-1/2" to 4" (mm)

SIZE	A	C	D1	D2	D3	D4	D5	L	L/2	3-Way W(kg)
2-1/2"	144	400	62	60.2	77.4	70.5	63.5	241.3	120.65	20.25
3"	162	500	76	72.9	91	83.2	76.2	279.4	139.7	26.36
4"	182	650	96	97.4	119	110.4	101.6	330.2	165.1	47.63

## PRESSURE/ TEMPERATURE





## BREAK-TORQUE VALUE (Nm)

SIZE	1/2"	3/4"	1"	1-1/2"	2"	2-1/2"	3"	4"
NON-GREASE	18.48	19.2	34.64	73.92	115.44	261.6	300.12	384.84

Note 1: The greases ZIPSON use including lubricant & anti-seize grease are both SILICONE-FREE.  
 Note 2: Strongly suggest increasing at least 30%~40% for safety factor for mounting actuator.

### CAUTION!

1. As dismantle the ball valve, don't forget to replace new Repair Kits, especially the gasket to prevent from leaking.
2. PTFE/TFM is better than RPTFE (+15% Glass) as operate the valve by actuator, for Glass fiber will hurt the ball and cause the torque value increasing.
3. Before welding, make sure the ends were dismantled for welding.
4. For multi-way valve, when the media is AIR and over 30 bar, please ask Zipson to make SS housing to protect the seat.