

Check Valve



Btl check valve usually be reliably used in steam, air, coal gas, oil or oil gas etc high or low–pressure condition. High or low–pressure valve normal adopt internal rocker to reduce medium external leakage. It can be equipped external lever and adjusting foundry weight and can be select connection type and trim material according to working condition if user need. Large check valve usually be equipped with vibration absorber.



◆ Cast steel check valve design structure and feature

Design and manufacture conform to ASME B 16.5 ,API 594,API 6D & BS 1868
Test and check conform to API 598.

◆ Adopt the following structure

Inside rocker
Renewable seat
Bolted bonnet, spiral would eight–square gasket sealing
bonnet or pressure seal bonnet

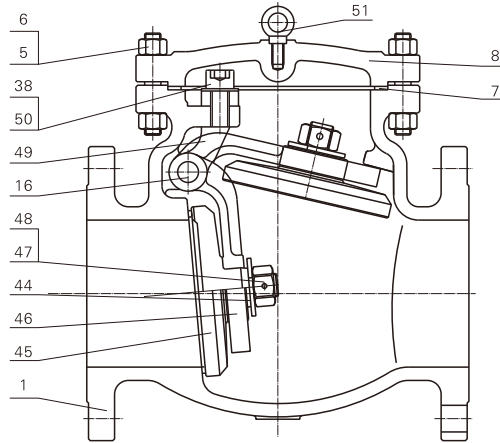
◆ According to the following standard

Flange ends conform to ASME B 16.5
Butt–welding end conform to ASME B 16.25
Face to face dimension conform to ASME B 16.10

Check Valve



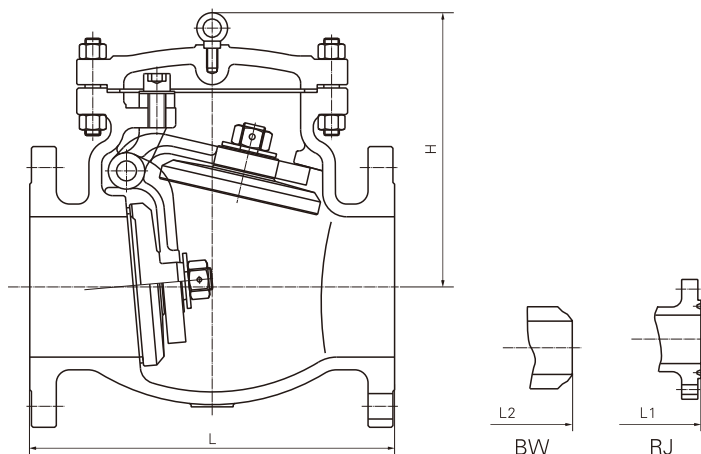
H44H Type



Main parts material sheet

| Item | Part name | WCB | LCC | C5 | C12 | WC6 | CF8M |
|------|-----------------|-----------------------|----------------|---------------|----------------|----------------|--------------|
| 1 | Body | A216 WCB | A352 LCC | A217 C5 | A217 C12 | A217 WC6 | A351 CF8M |
| 5 | Bolt | A193 B7 | A320 L7M | A193 B7 | A193 B7 | A193 B7 | A193 B8M |
| 6 | Nut | A194 2H | A194 7M | A194 2H | A194 2H | A194 2H | A194 8M |
| | Gasket 150Lb | Graphite | | | | | 316+graphite |
| 7 | Gasket 300Lb | 304+flexible graphite | | | | | Spiral wound |
| | Gasket ≥600Lb | F304 | | | | | Spiral wound |
| 8 | Bonnet | A216 WCB | A352 LCC | A217 C5 | A217 C12 | A217 WC6 | A351 CF8M |
| 16 | Pin | 410 | 410 | 410 | 410 | 410 | 304 |
| 38 | Hex. Bolt | A193 B8 | A193 B8 | A193 B8 | A193 B8 | A193 B8 | A193 B8 |
| 44 | Washer | 410 | 410 | 410 | 410 | 410 | 304 |
| 45 | Disc | A105/STL.6 | A350 LF2/STL.6 | A335-P5/STL.6 | AISI 321/STL.6 | A182 F11/STL.6 | A182 F316 |
| 46 | Rocker | A216 WCB | A352 LCC | A217 C5 | A217 C12 | A217 WC6 | A351 CF8M |
| 47 | Nut | 410 | 410 | 410 | 410 | 410 | 304 |
| 48 | Pin | 304 | 304 | 304 | 304 | 304 | 304 |
| 49 | Roke | A216 WCB | A352 LCC | A217 C5 | A217 C12 | A217 WC6 | A351 CF8M |
| 50 | Flexible washer | 17-4PH | 17-4PH | 17-4PH | 17-4PH | 17-4PH | 17-4PH |
| 51 | Hanger screw | A193 B8 | A193 B8 | A193 B8 | A193 B8 | A193 B8 | A193 B8 |

Check Valve



CL150

| Spec (NAP) | in | 2 | 2 1/2 | 3 | 4 | 5 | 6 | 8 | 10 | 12 | 14 | 16 | 18 | 20 | 24 | 28 | 30 |
|-------------------|----|-----|-------|-----|-----|-----|-----|-----|-----|-----|-----|-----|-----|-----|------|------|------|
| Face to face(mm) | L | 203 | 216 | 241 | 292 | 330 | 356 | 495 | 622 | 698 | 787 | 864 | 978 | 978 | 1295 | 1448 | 1524 |
| | L1 | 216 | 229 | 254 | 305 | 343 | 369 | 508 | 635 | 711 | 800 | 877 | 991 | 991 | 1308 | - | - |
| | L2 | 203 | 216 | 241 | 292 | 330 | 356 | 495 | 622 | 699 | 787 | 864 | 978 | 978 | 1295 | 1448 | 1524 |
| Center height(mm) | H | 145 | 160 | 180 | 210 | 250 | 292 | 360 | 400 | 465 | 524 | 620 | 690 | 720 | 740 | 850 | 1005 |
| Weight (Kg) | | 17 | 20 | 25 | 40 | 67 | 93 | 134 | 199 | 305 | 370 | 542 | 750 | 900 | 1200 | 1750 | 2100 |

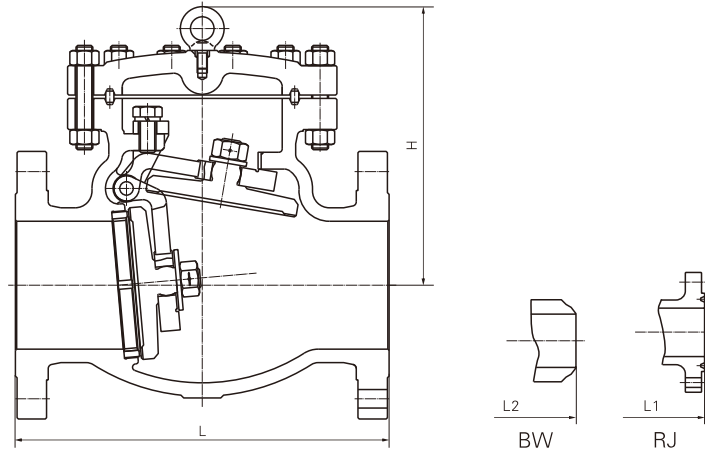
CL300

| Spec (NAP) | in | 2 | 2 1/2 | 3 | 4 | 5 | 6 | 8 | 10 | 12 | 14 | 16 | 18 | 20 | 24 | 28 | 30 |
|-------------------|----|-----|-------|-----|-----|-----|-----|-----|-----|-----|-----|-----|-----|------|------|----|----|
| Face to face(mm) | L | 267 | 292 | 318 | 356 | 400 | 444 | 533 | 622 | 711 | 838 | 864 | 978 | 1016 | 1346 | | |
| | L1 | 283 | 308 | 334 | 372 | 416 | 460 | 549 | 638 | 727 | 854 | 880 | 994 | 1035 | 1368 | | |
| | L2 | 267 | 292 | 318 | 356 | 400 | 444 | 533 | 622 | 711 | 838 | 864 | 978 | 1016 | 1346 | | |
| Center height(mm) | H | 158 | 180 | 200 | 228 | 285 | 315 | 385 | 432 | 490 | 552 | 625 | 676 | 742 | 810 | | |
| Weight (Kg) | | 23 | 37 | 46 | 71 | 100 | 118 | 202 | 296 | 428 | 583 | 754 | 935 | 1155 | 1408 | | |

CL600

| Spec (NAP) | in | 2 | 2 1/2 | 3 | 4 | 5 | 6 | 8 | 10 | 12 | 14 | 16 | 18 | 20 | 24 | 28 | 30 |
|-------------------|----|-----|-------|-----|-----|-----|-----|-----|-----|-----|-----|------|------|------|------|----|----|
| Face to face(mm) | L | 292 | 330 | 356 | 432 | 508 | 559 | 660 | 787 | 838 | 889 | 991 | 1092 | 1194 | 1397 | | |
| | L1 | 295 | 333 | 359 | 435 | 511 | 562 | 663 | 790 | 841 | 892 | 994 | 1095 | 1200 | 1407 | | |
| | L2 | 292 | 330 | 356 | 432 | 508 | 559 | 660 | 787 | 838 | 889 | 991 | 1092 | 1194 | 1397 | | |
| Center height(mm) | H | 170 | 188 | 238 | 290 | 325 | 355 | 415 | 478 | 540 | 580 | 670 | 786 | 845 | 940 | | |
| Weight (Kg) | | 26 | 32 | 49 | 86 | 165 | 252 | 429 | 557 | 670 | 944 | 1300 | 1760 | 2200 | 2864 | | |

Check Valve



CL900

| Spec (NAP) | in | 2 | 2 1/2 | 3 | 4 | 5 | 6 | 8 | 10 | 12 | 14 | 16 | 18 | 20 | 24 | |
|-------------------|----|-----|-------|-----|-----|-----|-----|-----|-----|-----|------|------|----|----|----|--|
| Face to face(mm) | L | 368 | 419 | 381 | 457 | 559 | 610 | 737 | 838 | 965 | 1029 | 1130 | | | | |
| | L1 | 371 | 422 | 384 | 460 | 562 | 613 | 740 | 841 | 968 | 1039 | 1140 | | | | |
| | L2 | 368 | 419 | 381 | 457 | 559 | 610 | 737 | 838 | 965 | 1059 | 1130 | | | | |
| Center height(mm) | H | 200 | 260 | 285 | 324 | 370 | 424 | 522 | 545 | 590 | 640 | 700 | | | | |
| Weight (Kg) | | 58 | 76 | 100 | 140 | 217 | 294 | 700 | 724 | 870 | 1254 | 1800 | | | | |

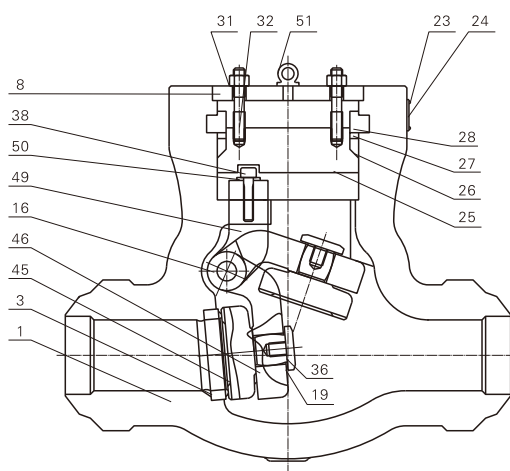
CL1500

| Spec (NAP) | in | 2 | 2 1/2 | 3 | 4 | 5 | 6 | 8 | 10 | 12 | 14 | 16 | 18 | 20 | 24 | |
|-------------------|----|-----|-------|-----|-----|-----|-----|-----|------|------|------|------|----|----|----|--|
| Face to face(mm) | L | 368 | 419 | 470 | 546 | 673 | 705 | 832 | 991 | 1130 | 1257 | 1384 | | | | |
| | L1 | 371 | 422 | 473 | 549 | 676 | 711 | 842 | 1001 | 1146 | 1276 | 1406 | | | | |
| | L2 | 368 | 419 | 470 | 546 | 673 | 705 | 832 | 991 | 1130 | 1257 | 1384 | | | | |
| Center height(mm) | H | 200 | 270 | 285 | 353 | 402 | 470 | 561 | 660 | 750 | 850 | 955 | | | | |
| Weight (Kg) | | 66 | 84 | 123 | 192 | 320 | 481 | 760 | 1058 | 1440 | 1745 | 2500 | | | | |

Check Valve



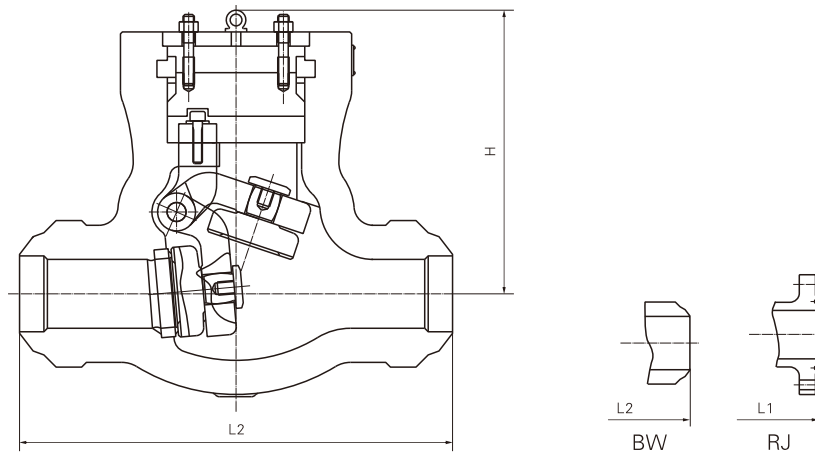
PH64Y Type



Main parts material sheet

| Item | Part name | WCB | WC6 | WC9 | CF8 | CF8M |
|------|----------------------|-----------------------|----------------|----------------|-----------|-----------|
| 1 | Body | A216 WCB | A217 WC6 | A217 WC9 | A351 CF8 | A351 CF8M |
| 3 | seat | A105/STL.6 | A182 F11/STL.6 | A182 F22/STL.6 | A182 F304 | A182 F316 |
| 8 | Bonnet | A216 WCB | A216 WCB | A216 WCB | A351 CF8 | A351 CF8 |
| 16 | Pin | A276 410 | A276 304 | A276 304 | A276 304 | A276 316 |
| 19 | 止定螺钉 | A193 B8 | A193 B8 | A193 B8 | A193 B8 | A193 B8 |
| 23 | Nameplate | AISI 304 | AISI 304 | AISI 304 | AISI 304 | AISI 304 |
| 24 | Rivet | AL | AL | AL | AL | AL |
| 25 | Pressure seal seat | A105 | A182 F11 | A182 F22 | A182 F304 | A182 F316 |
| 26 | Pressure seal gasket | 304+flexible graphite | | | | |
| 27 | Pressure seal ring | A182 F6a | A182 F6a | A182 F6a | A182 F304 | A182 F316 |
| 28 | Segment ring | A182 F6a | A182 F11 | A182 F22 | A182 F304 | A182 F316 |
| 31 | Hanger bolt | A193 B7 | A193 B7 | A193 B7 | A193 B8 | A193 B8 |
| 32 | Nut | A194 2H | A194 2H | A194 2H | A194 8 | A194 8 |
| 36 | Disc cover | A182 F6a | A182 F304 | A182 F304 | A182 F304 | A182 F304 |
| 38 | Hex. Bolt | A193 B8 | A193 B8 | A193 B8 | A193 B8 | A193 B8 |
| 45 | Disc | A105/STL.6 | A182 F11/STL.6 | A182 F22/STL.6 | A182 F304 | A182 F316 |
| 46 | Rocker | A216 WCB | A217 WC6 | A217 WC9 | A351 CF8 | A351 CF8M |
| 49 | Roke | A216 WCB | A217 WC6 | A217 WC9 | A351 CF8 | A351 CF8M |
| 50 | Flexible washer | 17-4PH | 17-4PH | 17-4PH | 17-4PH | 17-4PH |
| 51 | Hanger screw | A193 B7 | A193 B7 | A193 B7 | A193 B7 | A193 B7 |

Check Valve



CL900

| Spec (NAP) | in | 2 | 2 1/2 | 3 | 4 | 6 | 8 | 10 | 12 | 14 | 16 |
|-------------------|----|-----|-------|-----|-----|-----|-----|-----|------|------|------|
| Face to face(mm) | L | 368 | 419 | 381 | 457 | 610 | 737 | 838 | 965 | 1029 | 1130 |
| | L1 | 371 | 422 | 384 | 460 | 613 | 740 | 841 | 968 | 1039 | 1140 |
| | L2 | 216 | 254 | 305 | 356 | 508 | 660 | 787 | 914 | 991 | 1092 |
| Center height(mm) | H | 215 | 245 | 292 | 318 | 400 | 464 | 517 | 592 | 640 | 700 |
| Weight (Kg) | | 25 | 35 | 46 | 68 | 170 | 460 | 700 | 1020 | 1220 | 1350 |

CL1500

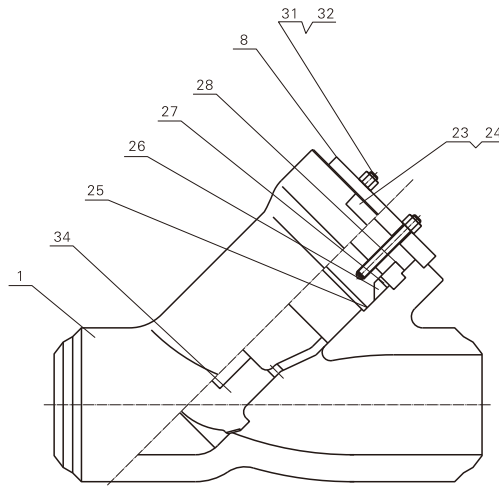
| Spec (NAP) | in | 2 | 2 1/2 | 3 | 4 | 6 | 8 | 10 | 12 | 14 | 16 |
|-------------------|----|-----|-------|-----|-----|-----|-----|------|------|------|------|
| Face to face(mm) | L | 368 | 419 | 470 | 546 | 705 | 832 | 991 | 1130 | 1257 | 1384 |
| | L1 | 371 | 422 | 473 | 549 | 711 | 842 | 1001 | 1146 | 1276 | 1406 |
| | L2 | 216 | 254 | 305 | 406 | 559 | 711 | 864 | 991 | 1067 | 1194 |
| Center height(mm) | H | 245 | 265 | 300 | 342 | 438 | 534 | 578 | 648 | 700 | 770 |
| Weight (Kg) | | 26 | 36 | 50 | 80 | 290 | 490 | 750 | 1110 | 1415 | 1605 |

CL2500

| Spec (NAP) | in | 2 | 2 1/2 | 3 | 4 | 6 | 8 | 10 | 12 | 14 | 16 |
|-------------------|----|-----|-------|-----|-----|-----|------|------|------|----|----|
| Face to face(mm) | L | 451 | 508 | 578 | 673 | 914 | 1022 | 1270 | 1422 | | |
| | L1 | 454 | 514 | 584 | 683 | 927 | 1038 | 1292 | 1445 | | |
| | L2 | 279 | 330 | 368 | 457 | 610 | 762 | 914 | 1041 | | |
| Center height(mm) | H | 250 | 280 | 308 | 352 | 440 | 540 | 580 | 660 | | |
| Weight (Kg) | | 60 | 85 | 100 | 165 | 460 | 900 | 1300 | 1800 | | |

Check Valve

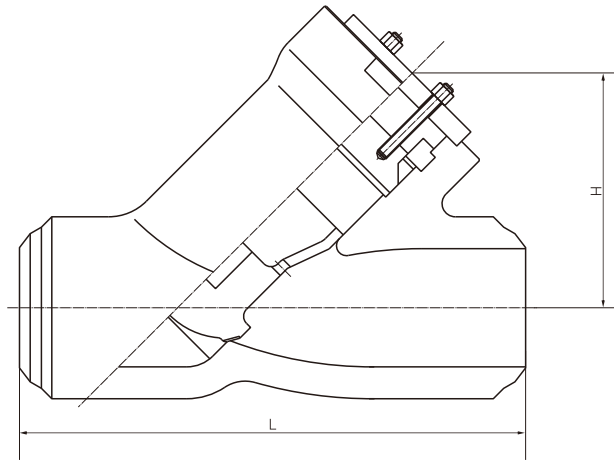
PYH61Y Type



Main parts material sheet

| Item | Part name | WCB | WC6 | WC9 | CF8 | CF3M | CE3MN |
|------|----------------------|-----------------------|----------|----------|-----------|------------|----------|
| 1 | Body | A216 WCB | A217 WC6 | A217 WC9 | A351 CF8 | A351 CF3M | CE3MN |
| 8 | Bonnet | A216 WCB | A216 WCB | A216 WCB | A351 CF8 | A351 CF8 | A351 CF8 |
| 23 | Nameplate | AISI 304 | AISI 304 | AISI 304 | AISI 304 | AISI 304 | AISI 304 |
| 24 | Rivet | AL | AL | AL | AL | AL | AL |
| 25 | Pressure seal seat | A105 | A182 F11 | A182 F22 | A182 F304 | A182 F316L | A182 F53 |
| 26 | Pressure seal gasket | 304+flexible graphite | | | | | |
| 27 | Pressure seal ring | A182 F6a | A182 F6a | A182 F6a | A182 F304 | A182 F316L | A182 F53 |
| 28 | Segment ring | A182 F6a | A182 F11 | A182 F22 | A182 F304 | A182 F316L | A182 F53 |
| 31 | Hanger bolt | A193 B7 | A193 B7 | A193 B7 | A193 B8 | A193 B8M | A193 B8M |
| 32 | Nut | A194 2H | A194 2H | A194 2H | A194 8 | A194 8M | A194 8M |
| 34 | Disc | A105 | A182 F11 | A182 F22 | A182 F304 | A182 F316L | A182 F53 |

Check Valve



CL600

| Spec (NAP) | in | 6 | 8 | 10 | 12 | 14 | 16 | 18 | 20 |
|-------------------|----|-----|-----|-----|-----|-----|------|------|------|
| Face to face(mm) | L | 457 | 584 | 711 | 813 | 813 | 1041 | 1041 | 1524 |
| Center height(mm) | H | 406 | 508 | 635 | 822 | 822 | 1054 | 1054 | 1194 |
| Weight (Kg) | | 182 | 272 | 454 | 658 | 658 | 1270 | 1270 | 1588 |

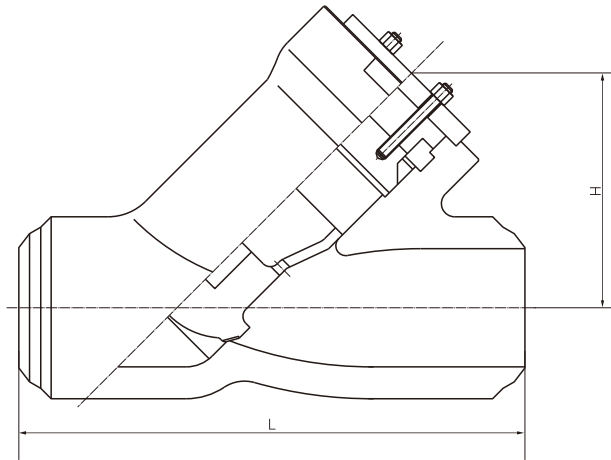
| Spec (NAP) | in | 8 x 6 x 8 | 10 x 8 x 10 | 12 x 10 x 12 | 14 x 12 x 14 | 16 x 14 x 16 | 18 x 16 x 18 | 20 x 18 x 20 | 22 x 20 x 22 |
|-------------------|----|-----------|-------------|--------------|--------------|--------------|--------------|--------------|--------------|
| Face to face(mm) | L | 457 | 584 | 711 | 813 | 813 | 1041 | 1041 | 1524 |
| Center height(mm) | H | 406 | 508 | 635 | 822 | 822 | 1054 | 1054 | 1194 |
| Weight (Kg) | | 182 | 303 | 506 | 724 | 724 | 1397 | 1397 | 1770 |

CL900

| Spec (NAP) | in | 6 | 8 | 10 | 12 | 14 |
|-------------------|----|-----|-----|-----|------|------|
| Face to face(mm) | L | 705 | 762 | 921 | 1041 | 1092 |
| Center height(mm) | H | 457 | 598 | 716 | 891 | 891 |
| Weight (Kg) | | 182 | 284 | 527 | 718 | 718 |

| Spec (NAP) | in | 8 x 6 x 8 | 10 x 8 x 10 | 12 x 10 x 12 | 14 x 12 x 14 | 16 x 14 x 16 |
|-------------------|----|-----------|-------------|--------------|--------------|--------------|
| Face to face(mm) | L | 705 | 762 | 921 | 1041 | 1092 |
| Center height(mm) | H | 457 | 598 | 716 | 891 | 891 |
| Weight (Kg) | | 182 | 316 | 582 | 795 | 794 |

Check Valve



CL1500

| Spec (NAP) | in | 6 | 8 | 10 | 12 | 14 | 16 | 18 | 20 |
|-------------------|----|-----|-----|-----|------|------|------|------|------|
| Face to face(mm) | L | 705 | 762 | 921 | 1041 | 1092 | 1372 | 1600 | 1600 |
| Center height(mm) | H | 457 | 598 | 716 | 891 | 891 | 1129 | 1129 | 1129 |
| Weight (Kg) | | 182 | 284 | 527 | 718 | 718 | 1397 | 1420 | 1782 |

| Spec (NAP) | in | 8 x 6 x 8 | 10 x 8 x 10 | 12 x 10 x 12 | 14 x 12 x 14 | 16 x 14 x 16 | 18 x 16 x 18 | 20 x 18 x 20 | 22 x 20 x 22 |
|-------------------|----|-----------|-------------|--------------|--------------|--------------|--------------|--------------|--------------|
| Face to face(mm) | L | 705 | 762 | 921 | 1041 | 1092 | 1372 | 1600 | 1384 |
| Center height(mm) | H | 457 | 598 | 716 | 891 | 891 | 1129 | 1129 | 1332 |
| Weight (Kg) | | 182 | 316 | 582 | 795 | 794 | 1534 | 1560 | 1977 |

CL2500

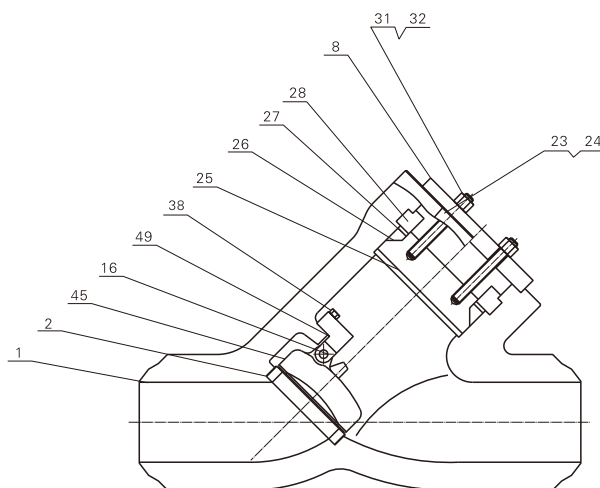
| Spec (NAP) | in | 6 | 8 | 10 | 12 | 14 |
|-------------------|----|-----|-----|-----|------|------|
| Face to face(mm) | L | 610 | 762 | 914 | 1041 | 1238 |
| Center height(mm) | H | 521 | 612 | 761 | 879 | 948 |
| Weight (Kg) | | 245 | 300 | 585 | 863 | 1380 |

| Spec (NAP) | in | 8 x 6 x 8 | 10 x 8 x 10 | 12 x 10 x 12 | 14 x 12 x 14 | 16 x 14 x 16 |
|-------------------|----|-----------|-------------|--------------|--------------|--------------|
| Face to face(mm) | L | 610 | 762 | 914 | 1041 | 1238 |
| Center height(mm) | H | 521 | 612 | 761 | 879 | 948 |
| Weight (Kg) | | 245 | 329 | 594 | 595 | 1530 |

Check Valve



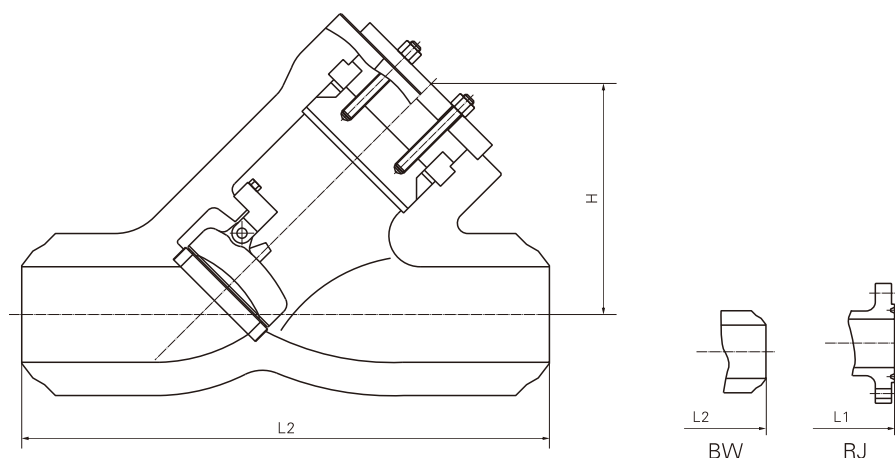
PYH64Y Type



Main parts material sheet

| Item | Part name | WCB | WC6 | WC9 | CF8 | CF3M | CE3MN |
|------|----------------------|-----------------------|----------|----------|-----------|------------|----------|
| 1 | Body | A216 WCB | A217 WC6 | A217 WC9 | A351 CF8 | A351 CF3M | CE3MN |
| 2 | Seat | A105 | A182 F11 | A182 F22 | A182 F304 | A182 F316L | A182 F53 |
| 8 | Bonnet | A216 WCB | A216 WCB | A216 WCB | A351 CF8 | A351 CF8 | A351 CF8 |
| 16 | Pin | A276 410 | A276 410 | A276 410 | A276 304 | A276 316L | A276 F53 |
| 23 | Nameplate | AISI 304 | AISI 304 | AISI 304 | AISI 304 | AISI 304 | AISI 304 |
| 24 | Rivet | AL | AL | AL | AL | AL | AL |
| 25 | Pressure seal seat | A105 | A182 F11 | A182 F22 | A182 F304 | A182 F316L | A182 F53 |
| 26 | Pressure seal gasket | 304+flexible graphite | | | | | |
| 27 | Pressure seal ring | A182 F6a | A182 F6a | A182 F6a | A182 F304 | A182 F316L | A182 F53 |
| 28 | Segment ring | A182 F6a | A182 F11 | A182 F22 | A182 F304 | A182 F316L | A182 F53 |
| 31 | Hanger bolt | A193 B7 | A193 B7 | A193 B7 | A193 B8 | A193 B8M | A193 B8M |
| 32 | Nut | A194 2H | A194 2H | A194 2H | A194 8 | A194 8M | A194 8M |
| 45 | Disc | A105 | A182 F11 | A182 F22 | A182 F304 | A182 F316L | A182 F53 |
| 49 | Roke | A216 WCB | A217 WC6 | A217 WC9 | A351 CF8 | A351 CF3M | CE3MN |

Check Valve



CL900

| Spec (NAP) | in | 2 | 2.5 | 3 | 4 | 6 | 8 | 10 | 12 | 14 | 16 | 18 | 20 |
|--------------------|----|-----|-----|-----|-----|-----|-----|-----|-----|------|------|------|------|
| Face to face(mm) | L | 254 | 254 | 304 | 355 | 508 | 660 | 787 | 914 | 990 | 1092 | 1219 | 1320 |
| | L1 | 381 | 381 | 381 | 457 | 609 | 736 | 838 | 965 | 1028 | 1130 | 1219 | 1320 |
| | L2 | 384 | 384 | 384 | 460 | 612 | 739 | 841 | 968 | 1039 | 1140 | 1232 | 1333 |
| Center height(mm) | H | 190 | 190 | 190 | 190 | 241 | 304 | 381 | 419 | 457 | 501 | 596 | 660 |
| Weight (Kg) weld | | 20 | 20 | 20 | 23 | 59 | 109 | 213 | 326 | 408 | 589 | 834 | 1102 |
| Weight (Kg) flange | | 50 | 50 | 50 | 68 | 159 | 276 | 473 | 662 | 907 | 1179 | 1655 | 2143 |

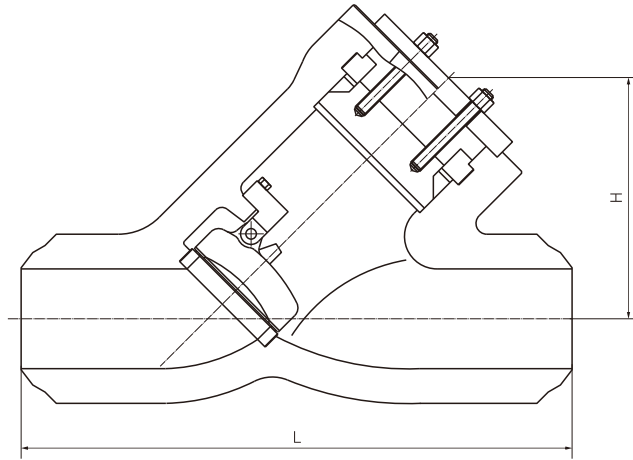
| Spec (NAP) | in | 8 x 6 x 8 | 10 x 8 x 10 | 12 x 10 x 12 | 14 x 12 x 14 | 16 x 14 x 16 | 18 x 16 x 18 | 20 x 18 x 20 |
|-------------------|----|-----------|-------------|--------------|--------------|--------------|--------------|--------------|
| Face to face(mm) | L | 609 | 736 | 838 | 965 | 1028 | 1130 | 1219 |
| Center height(mm) | H | 241 | 304 | 381 | 419 | 457 | 501 | 596 |
| Weight (Kg) | | 63 | 113 | 219 | 335 | 421 | 612 | 857 |

CL1500

| Spec (NAP) | in | 2 | 2.5 | 3 | 4 | 6 | 8 | 10 | 12 |
|--------------------|----|-----|-----|-----|-----|-----|-----|------|------|
| Face to face(mm) | L | 254 | 254 | 304 | 406 | 558 | 711 | 863 | 990 |
| | L1 | 469 | 469 | 469 | 546 | 704 | 831 | 990 | 1130 |
| | L2 | 473 | 473 | 473 | 549 | 711 | 841 | 1000 | 1146 |
| Center height(mm) | H | 196 | 196 | 196 | 215 | 266 | 342 | 419 | 469 |
| Weight (Kg) weld | | 25 | 25 | 25 | 36 | 91 | 182 | 326 | 499 |
| Weight (Kg) flange | | 68 | 68 | 68 | 99 | 235 | 424 | 725 | 1088 |

| Spec (NAP) | in | 8 x 6 x 8 | 10 x 8 x 10 | 12 x 10 x 12 | 14 x 12 x 14 |
|-------------------|----|-----------|-------------|--------------|--------------|
| Face to face(mm) | L | 705 | 831 | 990 | 1130 |
| Center height(mm) | H | 266 | 342 | 419 | 469 |
| Weight (Kg) | | 99 | 195 | 340 | 517 |

Check Valve



CL2500

| Spec (NAP) | in | 2 | 2.5 | 3 | 4 | 6 | 8 | 10 | 12 | 14 | 16 | 18 | 20 |
|--------------------|----|-----|-----|-----|-----|-----|-----|------|------|------|------|------|------|
| Face to face(mm) | L | 330 | 330 | 368 | 457 | 610 | 762 | 914 | 1041 | 1117 | 1219 | 1346 | 1447 |
| Center height(mm) | H | 203 | 203 | 203 | 304 | 330 | 406 | 457 | 533 | 584 | 660 | 711 | 787 |
| Weight (Kg) weld | | 36 | 26 | 26 | 50 | 145 | 281 | 520 | 725 | 975 | 1247 | 1587 | 1927 |
| Weight (Kg) flange | | 113 | 113 | 113 | 159 | 445 | 694 | 1429 | 2068 | 2227 | 2590 | 2864 | 3272 |

| Spec (NAP) | in | 8 x 6 x 8 | 10 x 8 x 10 | 12 x 10 x 12 | 14 x 12 x 14 | 16 x 14 x 16 | 18 x 16 x 18 | 20 x 18 x 20 |
|-------------------|----|-----------|-------------|--------------|--------------|--------------|--------------|--------------|
| Face to face(mm) | L | 711 | 863 | 1009 | 1041 | 1117 | 1244 | 1511 |
| Center height(mm) | H | 330 | 406 | 457 | 533 | 584 | 660 | 711 |
| Weight (Kg) | | 154 | 290 | 544 | 752 | 1011 | 1292 | 1950 |

