

INVERTED BUCKET STEAM TRAPS IB12

DESCRIPTION

The IB12 series inverted bucket steam traps are recommended for applications where the most important requirements are overall operating efficiency and long, trouble-free service life.

They operate intermittently, either wide open or tightly closed and are, therefore, best suited for medium and high steam pressure applications.

Connections are female screwed for horizontal installation.

MAIN FEATURES

- Intermittent discharge.
- Discharges condensate at steam temperature.
- Unaffected by water hammer and vibrations.
- Easy to maintain.



- USE:** Saturated and superheated steam.
- AVAILABLE MODELS:** IB12-4; IB12-8; IB12-12.
- SIZES:** 1/2" to 3/4".
- CONNECTIONS:** Female screwed ISO7/1 Rp (BS21).
Threaded flanges on request.
- INSTALLATION:** Horizontal installation.
See IMI – Installation and Maintenance Instructions.

MAX. DIFFERENTIAL PRESSURE

- IB12 - 4 : 4 bar
- IB12 - 8 : 8 bar
- IB12-12 : 12 bar

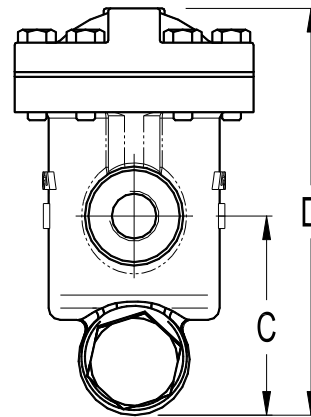
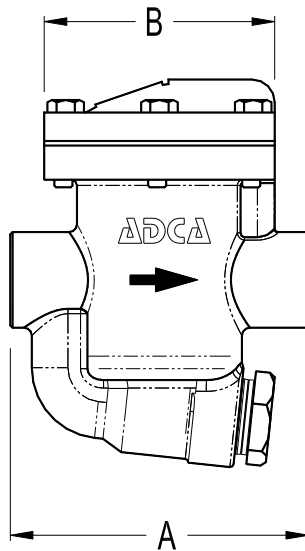
BODY LIMITING CONDITIONS	
THREADED PN16	RELATED TEMP.
ALLOW. PRESS.	
16 bar	100 °C
15,5 bar	150 °C
14,7 bar	200 °C
13,9 bar	250 °C

PMO – Max. operating pressure 14 bar;
TMO – Max. operating temperature 198 °C.

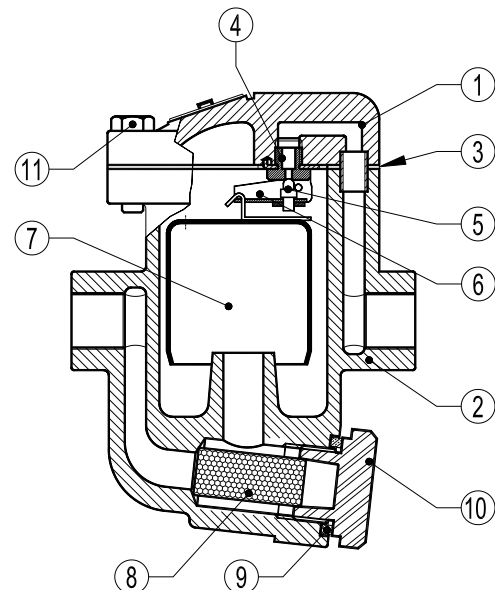
CE MARKING – GROUP 2 (PED – European Directive)	
PN16	Category
1/2" to 3/4"	SEP

FLOW RATE CAPACITY (kg/h)												
MODEL	SIZE	DIFFERENTIAL PRESSURE (bar)										
		1	2	3	4	5	6	7	8	10	11	12
IB12-4	1/2" to 3/4"	280	390	470	530	–	–	–	–	–	–	–
IB12-8	1/2" to 3/4"	190	260	320	360	400	430	460	500	–	–	–
IB12-12	1/2" to 3/4"	160	220	260	290	320	360	370	400	440	480	490

DIMENSIONS (mm)					
Size	A	B	C	D	WGT. (kg)
1/2"	130	102	85	170	3,9
3/4"	130	102	85	170	3,9



MATERIALS		
POS. N°	DESIGNATION	MATERIAL
1	Body	GJS-400-15 / 0.7040
2	Cover	GJS-400-15 / 0.7040
3	* Gasket	Stainless steel / Graphite
4	* Seat	AISI 410 / 1.4006
5	* Valve	AISI 410 / 1.4006
6	* Lever	AISI 304 / 1.4301
7	* Bucket	AISI 304 / 1.4301
8	* Strainer screen	AISI 304 / 1.4301
9	Gasket	Stainless steel / Graphite
10	Plug	A105 / 1.0432
11	Bolts	Steel 8.8



* Available spare parts.