

## SANITARY SIGHT GLASS SWS

### DESCRIPTION

The SWS sanitary sight glasses are designed to monitor liquid flow in any direction.

Sight glasses (or flow indicators) are usually employed to detect either the presence or absence of fluid flow, turbulence, colour, etc.

They are specially recommended for high purity applications.

### MAIN FEATURES

Compact design.

Completely machined from bar stock materials, no castings or forgings are used on the standard version.

Precision glass mounted without stress.

Excellent visualization.

### STANDARD SURFACE FINISH

Internal wetted parts:  $\leq 0,51$  micron Ra – SF1.

External:  $\leq 0,76$  micron Ra – SF3.

Other surface conditions see IS PV20.00 E – Technical information.

Ultrasonic cleaning.



OPTIONS: Full view design.

USE: Water and other gases and liquids compatible with the construction.

AVAILABLE MODELS: SWS.

SIZES: 1/2" to 4".

CONNECTIONS: Clamp ends or others on request.

PACKAGING: Assembling and packaging in a clean room certified according to ISO 14644-1. The product is end capped and sealed with recyclable thermo-shrinkable plastic film, to avoid contamination.

INSTALLATION: In any position.

#### LIMITING CONDITIONS

Maximum operating temperature (steam and water) – EPDM seals *	180 °C
Maximum operating temperature (air and other gases) – EPDM seals	150 °C
Maximum operating temperature – PTFE seals	200 °C
Minimum operating temperature	- 10 °C

\* High performance EPDM. Max. op. temp. of 210 °C, for short periods of time.

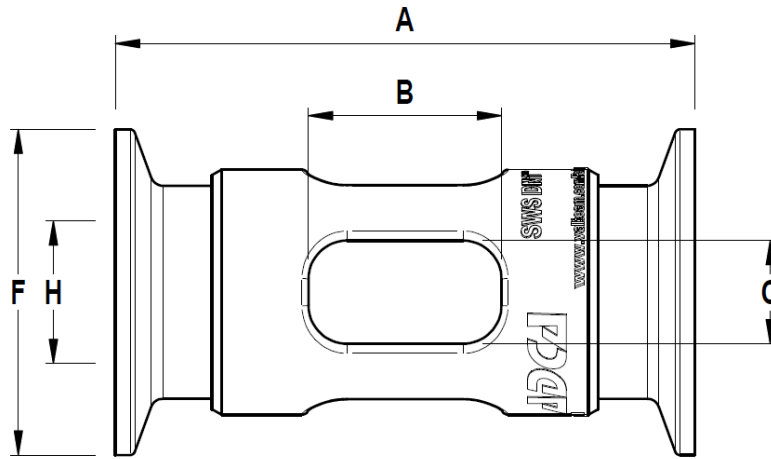
#### CE MARKING (PED – European Directive)

Sizes	Category
1/2" to 4"	SEP

#### MAXIMUM OPERATING PRESSURE (bar)

1/2"	3/4"	1"	1 1/2"	2"	2 1/2"	3"	4"
20	16	14	10	10	9	9	8

DIMENSIONS (mm) ASME BPE						
SIZE	A	B	C	Ø F	Ø H	WGT. (kg)
1/2"	76	20	10	25	9,4	0,13
3/4"	92	30	10	25	15,75	0,23
1"	92	30	15	50,5	22,1	0,4
1 1/2"	105	32	24	50,5	34,8	0,58
2"	120	48	34	64	47,5	0,83
2 1/2"	151	55	40	77,5	60,2	1,35
3"	175	90	50	91	72,9	2,53
4"	200	110	60	119	97,38	3,81



MATERIALS		
POS. Nº	DESIGNATION	MATERIAL
1	Valve body	AISI 316L / 1.4404
2	* Glass	Borosilicate
3	Connection ends	AISI 316L / 1.4404
4	* O-ring	High performance EPDM
5	* O-ring	High performance EPDM **
	* O-ring	PTFE **

\* Available spare parts; \*\* Others available on request.

Remarks: FDA / USP Class VI seals certificate on request.

All products have a serial number. In case of non standard products, this number must be supplied if spare parts are ordered.

