

## PIPELINE UNIVERSAL CONNECTORS UCX41

### DESCRIPTION

The UCX series pipeline connectors are used in steam systems where a simple and economic maintenance program is desired.

Typical installations are drip service on steam lines, tracing applications and small process equipment.

The two-bolt flange connector allows for fast trap replacement without disturbing the pipelines.

The UCX connector fits the universal swivel connection steam traps.

Connections are female screwed, or flanged on request.

### MAIN FEATURES

Remains permanently in-line making the replacement of new traps easier and quicker.

Steam traps can swivel 360°, allowing any pipe orientation during installation.

The universal flange allows the trap to be positioned in the correct position, regardless of pipeline configuration.

Built-in strainer.

**OPTIONS:** Flanged connections.  
Blowdown valve.

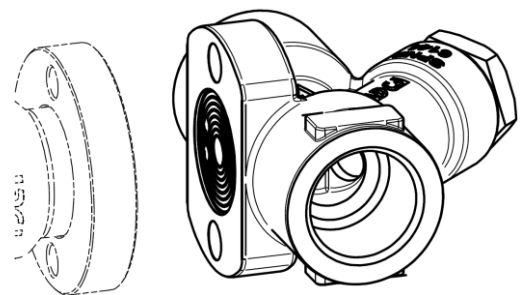
**USE:** Saturated and superheated steam.

**AVAILABLE MODELS:** UCX41 - Stainless steel construction.

**SIZES:** 1/2" to 1"; DN 15 to DN 25.

**CONNECTIONS:** Female screwed ISO 7/1 Rp (BS21).

**INSTALLATION:** With the surface for swivel connection in a vertical plane (mechanical steam traps), or alternatively in an horizontal plane, for thermostatic steam traps.



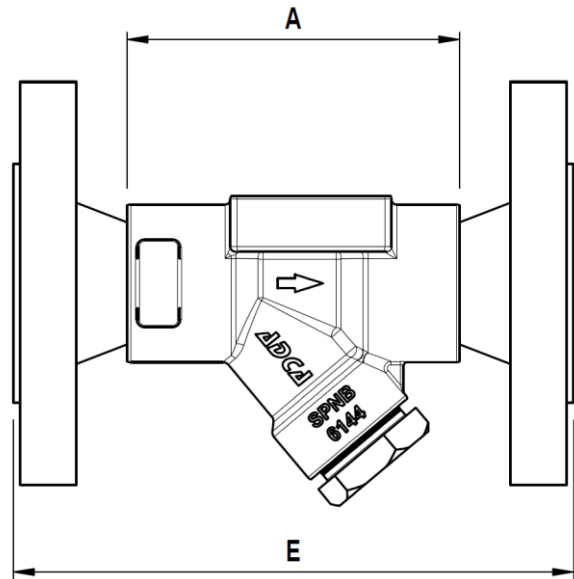
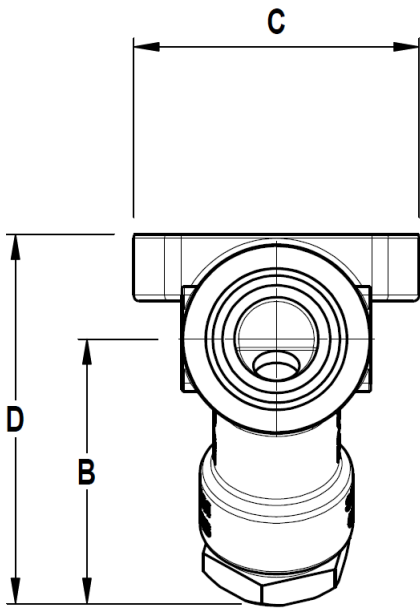
### BODY LIMITING CONDITIONS

THREADED / SW	FLANGED PN40 *	FLANGED ANSI 150 lb **	FLANGED ANSI 300 lb **	RELATED TEMP.
ALLOW. PRESS.	ALLOW. PRESS.	ALLOW. PRESS.	ALLOW. PRESS.	
47,8 bar	40 bar	18,3 bar	47,8 bar	-10 / 50 °C
40,9 bar	34,4 bar	15,7 bar	40,9 bar	100 °C
34,4 bar	28 bar	13,2 bar	34,4 bar	200 °C
30,6 bar	24,1 bar	10,2 bar	30,6 bar	300 °C
28,6 bar	22 bar	6,5 bar	28,6 bar	400 °C

\* According to EN 1092-1:2018; \*\* Acc. to EN 1759-1:2004;

DIMENSIONS (mm)											
Screwed and SW						PN16/40		ANSI 150 lb		ANSI 300 lb	
Size	A	B	C	D	WGT. (kg)	E	WGT. (kg)	E	WGT. (kg)	E	WGT. (kg)
1/2" – DN 15	80	63	68	88	1	150	2,4	150	2	150	2,4
3/4" – DN 20	80	63	68	88	1	150	3	150	2,5	150	3,3
1" – DN 25	95	63	68	88	1,1	160	3,6	160	3,1	160	3,8

\* BW (butt weld) on request.



MATERIALS		
POS. Nº	DESIGNATION	MATERIAL
1	Body	CF8 / 1.4308
2	Strainer cap	AISI 304 / 1.4301
3	* Strainer screen	AISI 304 / 1.4301
4	* Gasket	AISI 304 / 1.4301

\* Available spare parts.

