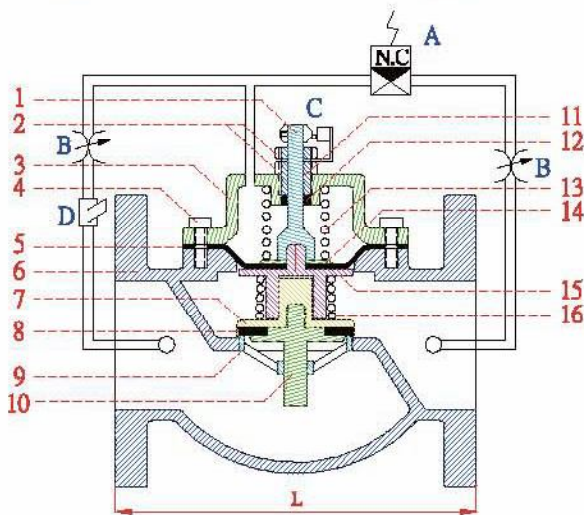




# PUMP CONTROL VALVE

- ▶ Perfectly prevents water hammer effect.
- ▶ Pump Control Valve = Pump's Variable Drive + Check Valve + Water Hammer Arrester. No need to use "Inverter Duty Motor" and save costs.
- ▶ Speed of valve opening and closing are adjustable upon request.
- ▶ Simple installation and outstanding function.
- ▶ Piston design structure resists high pressure and makes maintenance & replacement easy.
- ▶ It is convenient to clean the impurities inside valve gate from the cleaning plug.



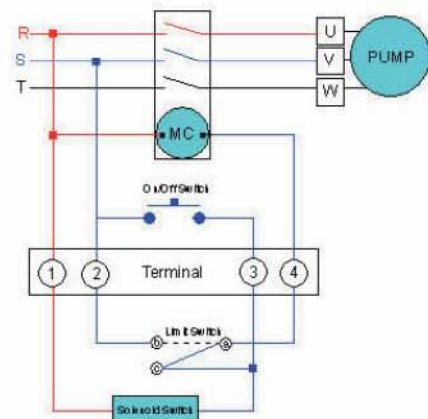
(Flange End)

No.	Size	L	CV	Weight(kg)
RPF-50	2"	190	30	14
RPF-65	2.5"	210	85	18
RPF-80	3"	225	95	19
RPF-100	4"	250	150	26
RPF-150	6"	310	320	52
RPF-200	8"	420	750	115
RPF-250	10"	530	1400	150

▶ Applied temperature: -15° ~ 80°C

	Cast Iron	Ductile Iron	Bronze	Stainless Steel
Testing Pressure	24kg/cm <sup>2</sup>	30kg/cm <sup>2</sup>	24kg/cm <sup>2</sup>	38kg/cm <sup>2</sup>
Working Pressure	16kg/cm <sup>2</sup>	20kg/cm <sup>2</sup>	16kg/cm <sup>2</sup>	25kg/cm <sup>2</sup>

No	Part Name	Material	
1.	Positioning Shaft	Brass	Stainless Steel 304
2.	Screw Nut	Steel	Stainless Steel 304
3.	Upper Cover	Ductile Iron / Bronze	Stainless Steel 304
4.	Cover Fixing Bolt	Steel	Stainless Steel 304
5.	Diaphragm	CR Rubber + Nylon	CR Rubber + Nylon
6.	Main Body	Ductile Iron / Bronze	Stainless Steel 304
7.	Gate	Ductile Iron / Bronze	Stainless Steel 304
8.	Sealing	NBR	NBR
9.	Seat	Bronze	Stainless Steel 304
10.	Gate Shaft	Bronze	Stainless Steel 304
11.	Fixing Ring	Bronze	Stainless Steel 304
12.	U-ring	NBR / Viton	NBR / Viton
13.	Back Pressure Spring	Stainless Steel 304	Stainless Steel 304
14.	Washer	Brass	Stainless Steel 304
15.	Shaft	Ductile Iron / Bronze	Stainless Steel 304
16.	Gate Spring	Stainless Steel 304	Stainless Steel 304
A.	Solenoid Valve	Bronze	Stainless Steel 304
B.	Needle Valve	Bronze	Stainless Steel 304
C.	Limit Switch	Normal Type	Normal Type
D.	Filter	Bronze	Stainless Steel 304



Power Distribution Chart

# Function of Pump Control Valve

