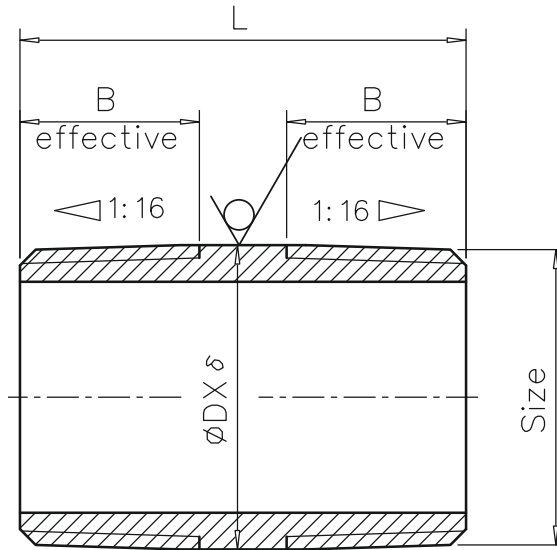


Machining Tolerances	
Dimension	Tolerance
0.5–3	±0.1
>3–6	±0.1
>6–30	±0.1
>30–120	±0.3
>120–400	±0.5



Size	L	B (effective)	G	ØDX δ
1/8"	40	10	1.2	Ø10.5X2
1/4"	40	10	1.2	Ø13.7X2.24
3/8"	40	10	1.2	Ø17.15X2.31
1/2"	60	13	1.2	Ø21.34X2.77
3/4"	60	15	1.2	Ø26.67X2.87
1"	60	17	1.5	Ø33.4X3.38
1-1/4"	80	19	1.5	Ø42.16X3.56
1-1/2"	80	19	1.5	Ø48.26X3.68
2"	100	23	1.5	Ø60.33X3.91
2-1/2"	100	27	1.5	Ø76.2X5.16
3"	120	30	1.5	Ø88.9X5.49
4"	120	36	1.5	Ø114.3X6.02