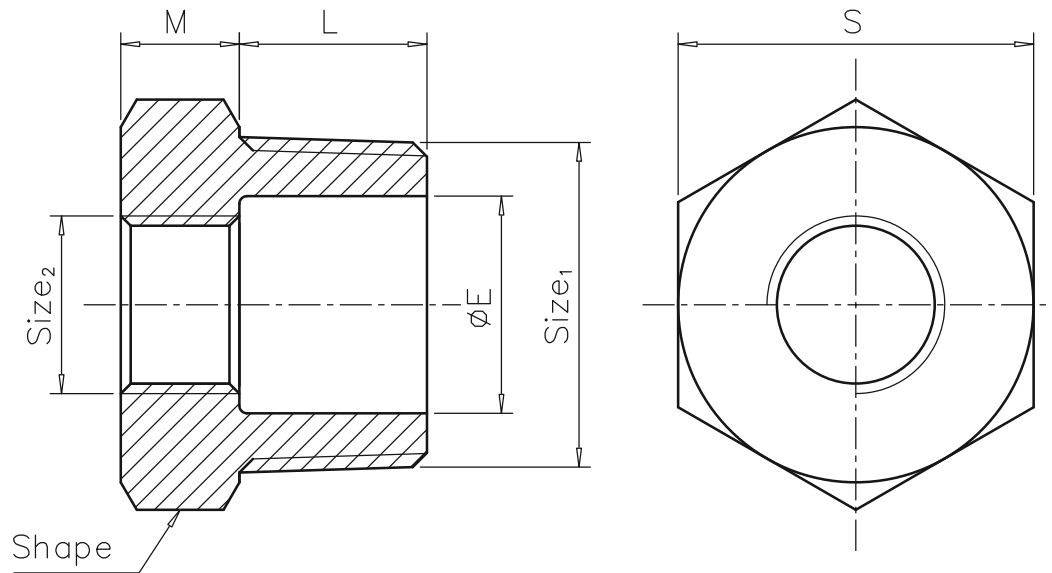


Machining Tolerances	
Dimension	Tolerance
0.5-3	±0.1
>3-6	±0.1
>6-30	±0.1
>30-120	±0.3
>120-400	±0.5



unit: mm

* *

Size ₁ / Size ₂	1/4"		3/8"		1/2"			3/4"				1"				1-1/4"			1-1/2"				2"					2-1/2"						
	1/8"	1/8"	1/4"	1/8"	1/4"	3/8"	1/8"	1/4"	3/8"	1/2"	1/8"	1/4"	3/8"	1/2"	3/4"	1/2"	3/4"	1"	1-1/4"	1/2"	3/4"	1"	1-1/4"	1-1/2"	1/2"	3/4"	1"	1-1/4"	1-1/2"	2"				
S	14.5	18.5	22.5	28				35				44			49.5				61.5					77.5										
E	8	11.5	15	20.5				26				34.5			40				51					65.5										
L	10.5	11	14.5	15.5				18				20.5			20.5				25					27										
M	4	5	5	5.5				6				6.5			6.5				7					7										
Weight	0.008	0.016	0.014	0.030	0.028	0.023	0.051	0.044	0.042	0.032	0.086	0.082	0.077	0.078	0.058	0.143	0.126	0.096	0.214	0.207	0.161	0.141	0.094	0.369	0.295	0.323	0.249	0.205	0.620	0.571	0.529	0.482	0.436	0.370

* *

Size ₁ / Size ₂	3"						4"			5"	6"	
	3/4"	1"	1-1/4"	1-1/2"	2"	2-1/2"	2"	2-1/2"	3"	4"	4"	5"
S	90.5						116.5			140	165	
E	77.5						101.5			120	145	
L	30						36			42.4	42.4	
M	7.5						8			12.6	12.6	
Weight	0.854	0.981	0.889	0.701	0.603	0.411	1.461	1.123	0.900	1.932	3.440	2.424

According to ISO 4144 Fig.9 B1

Shape: 1/8"-1/2"

Hexagon

3/4"-2"

Octagon

2-1/2"-6"

Decagon

* means the size is non standard.



Hex Bushing

304/316

Rev: 07.23.2018