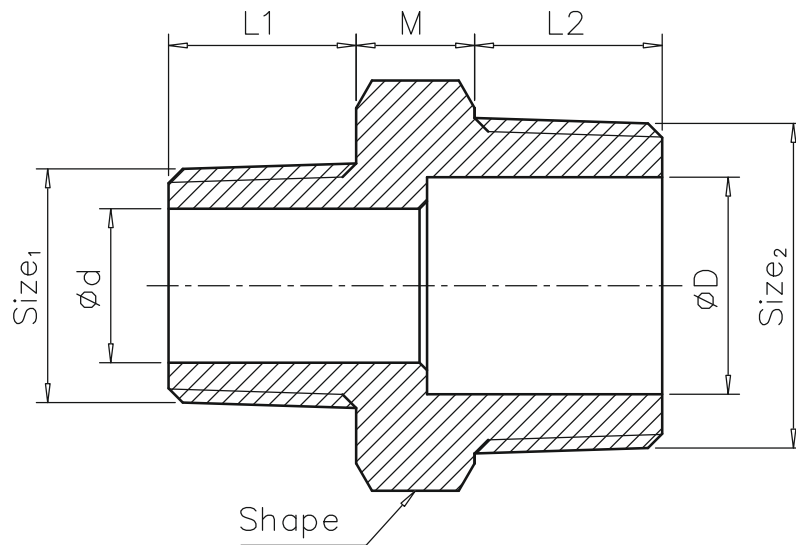


Machining Tolerances	
Dimension	Tolerance
0.5-3	±0.1
>3-6	±0.1
>6-30	±0.1
>30-120	±0.3
>120-400	±0.5



unit: mm

Size <sub>1</sub> \ Size <sub>2</sub>	*			*			*			*			*			*			*			*			*			*									
	1/4"	3/8"	1/2"	3/4"	1"	1-1/4"	1-1/2"	2"	2-1/2"	3"	4"	1/8"	1/4"	3/8"	1/2"	3/4"	1"	1-1/4"	1-1/2"	2"	2-1/2"	3"	4"	1/8"	1/4"	3/8"	1/2"	3/4"	1"	1-1/4"	1-1/2"	2"	2-1/2"	3"	4"		
L1	8	8	10.5	8	10.5	11	10.5	11	14.5	10.5	11	14.5	15.5	14.5	15.5	15.5	18	14.5	15.5	18	20.5	15.5	18	20.5	20.5	18	20.5	20.5	18	20.5	20.5	20.5	25	25	27	27	30
L2	10.5	11	11	14.5	14.5	14.5	14.5	15.5	15.5	14.5	18	18	18	18	18	20.5	20.5	18	18	20.5	20.5	18	25	25	25	27	27	30	30	36	36	36	36	36	36		
M	4	5	5	5	5	5	5	5.5	5.5	5	6	6	6	6	6	6.5	6.5	6	6	6.5	6.5	6	7	7	7	7	7	7.5	7.5	8	8	8	8	8	8		
d	5.5	5.5	8	5.5	8	11.5	8	11.5	15	8	11.5	15	20.5	15	20.5	20.5	26	15	20.5	26	34.5	20.5	26	34.5	40	40	51	51	65.5	65.5	65.5	65.5	77.5	77.5			
D	8	11.5	15	20.5	26	34.5	40	51	65.5	77.5	101.5																										

According to ISO 4144 Fig.11 N2

\* means the size is non standard.

Shape: 1/8"-1/2" Hexagon  
 3/4"-2" Octagon  
 2-1/2"-4" Decagon



Red. Nipple

304/316

Rev: 6.22.2018