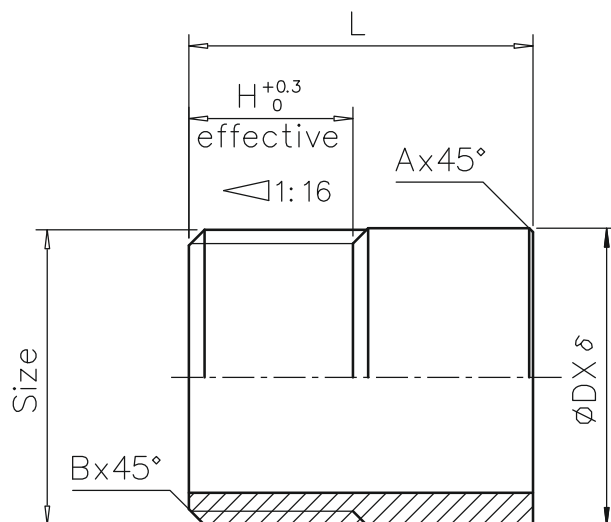


Machining Tolerances	
Dimension	Tolerance
0.5–3	±0.1
>3–6	±0.1
>6–30	±0.1
>30–120	±0.3
>120–400	±0.5



Size	L	H (effective)	A	B	ØDX δ
R1/8"	30	9	1	1	Ø10.2X2
R1/4"	30	11	1	1	Ø13.7X2.24
R3/8"	30	12	1	1	Ø17.1X2.31
R1/2"	35	14	1	1.5	Ø21.3X2.77
R3/4"	40	16	1.2	1.5	Ø26.6X2.87
R1"	40	18	1.5	2	Ø33.4X3.38
R1-1/4"	50	19.5	1.5	2	Ø42.1X3.56
R1-1/2"	50	21	1.5	2	Ø48.3X3.68
R2"	50	23.5	1.5	2	Ø60.3X3.91
R2-1/2"	60	27	1.5	2	Ø76.1X5.16
R3"	70	30	1.5	2	Ø88.9X5.49
R4"	80	36	1.5	2	Ø114.3X6.02