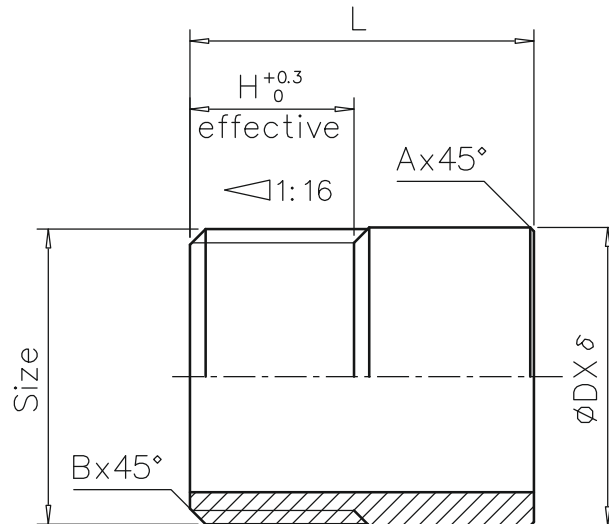


| Machining Tolerances |           |
|----------------------|-----------|
| Dimension            | Tolerance |
| 0.5–3                | ±0.1      |
| >3–6                 | ±0.1      |
| >6–30                | ±0.1      |
| >30–120              | ±0.3      |
| >120–400             | ±0.5      |



| Size    | L   | H<br>(effective) | A   | B   | $\varnothing D \times \delta$  | Weight |
|---------|-----|------------------|-----|-----|--------------------------------|--------|
| R1/8"   | 25  | 9                | 1   | 1   | $\varnothing 10.2 \times 1.5$  | 0.009  |
| R1/4"   | 25  | 11               | 1   | 1   | $\varnothing 13.7 \times 2.24$ | 0.011  |
| R3/8"   | 30  | 12               | 1   | 1   | $\varnothing 17.1 \times 2.31$ | 0.017  |
| R1/2"   | 35  | 14               | 1   | 1.5 | $\varnothing 21.3 \times 2.3$  | 0.032  |
| R3/4"   | 40  | 16               | 1.2 | 1.5 | $\varnothing 26.6 \times 2.3$  | 0.049  |
| R1"     | 40  | 18               | 1.5 | 2   | $\varnothing 33.4 \times 2.8$  | 0.071  |
| R1-1/4" | 50  | 19.5             | 1.5 | 2   | $\varnothing 42.1 \times 2.8$  | 0.115  |
| R1-1/2" | 50  | 21               | 1.5 | 2   | $\varnothing 48.3 \times 2.8$  | 0.132  |
| R2"     | 50  | 23.5             | 1.5 | 2   | $\varnothing 60.3 \times 3.3$  | 0.207  |
| R2-1/2" | 60  | 27               | 1.5 | 2   | $\varnothing 76.1 \times 3.3$  | 0.313  |
| R3"     | 70  | 30               | 1.5 | 2   | $\varnothing 88.9 \times 3.8$  | 0.456  |
| R4"     | 80  | 36               | 1.5 | 2   | $\varnothing 114.3 \times 3.8$ | 0.680  |
| R5"     | 100 | 41               | 1.5 | 2   | $\varnothing 139.8 \times 5$   | 1.291  |
| R6"     | 120 | 41               | 1.5 | 2   | $\varnothing 165.2 \times 6$   | 2.286  |