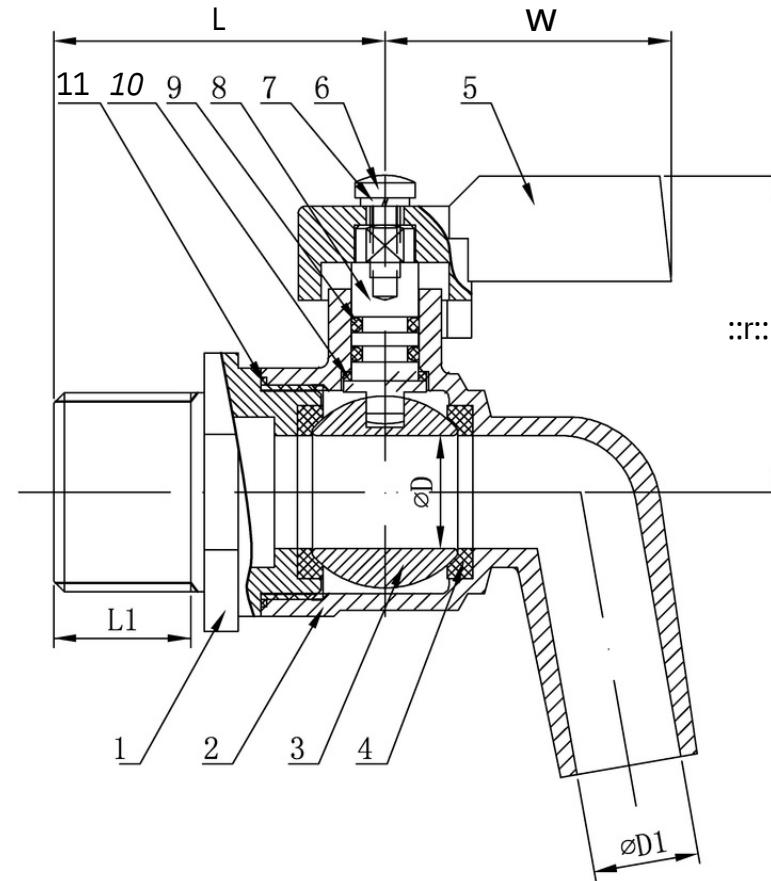
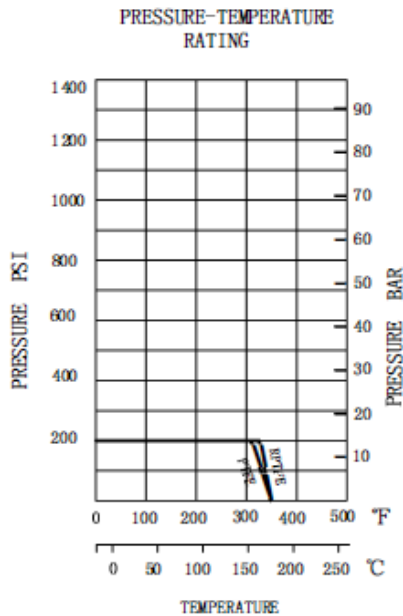


Drain Tap



Features:

1. Temperature Range: -20 to 180 C
2. Reduce Port
3. Investment Casting
4. Blow-out Proof Stem
5. PED 2014/68/EU
6. Thread: DIN2999/259, ISO228 1, ISO7/1, NPT
7. Inspection Testing: API598, EN12266 1



1"	20	18.5	48	38	45	20
3/4"	15	14	40	38	42	15
1/2"	10	8.6	31.5	38	38	13
3/8"	10	8.6	31.5	38	38	13
SIZE ITEM	D	D1	L	W	H	L1

11	END SEAL	PTFE	1
10	THRUST WASHER	PTFE	1
9	O - RING	NBR	2
8	STEM	304/316	1
7	SPRING WASHER	304	1
6	HAND BOLT	304	1
5	HANDLE	CF8/CF8M	1
4	BALL SEAT	PTFE/RPTFE	2
3	BALL	304/316	1
2	BODY	CF8/CF8M	1
1	CAP	CF8/CF8M	1
NO.	NAME	MATERIAL	QTY

1

